



## 631 Maxima

Grey anodized anti trauma scoop stretcher with head/trunk in 1 pc



### FEATURES

Scoop stretcher: the difference between this model and art. 630 is that the head and torso areas are united in one piece instead of two. They share the same size.



Device certified according to the European harmonized standards UNI EN 1865 - UNI EN 1789

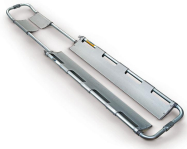
### MAIN FEATURES

Size	Adults
Usage	Rescue
Height (cm)	7
Width (cm)	42
Length (cm)	167
Max length (cm)	202
Folded length (cm)	120
Epaisseur pliée (cm)	9
Weight (kg)	9,5
Loading capacity (kg)	170
Type	
10G Certification	
Material	Anodized aluminium

---

## IMAGES

---



---

## SEE ALSO

---



**Maxima 631/G**  
Yellow painted anti trauma scoop  
stretcher with head/trunk in one  
piece



**Maxima 630/N**  
Black painted anti trauma scoop  
stretcher



**Maxima 630/G**  
Yellow painted anti trauma scoop  
stretcher



**Maxima 630/V**  
Green painted anti trauma scoop  
stretcher



**Maxima 630/B**  
Blue painted anti trauma scoop  
stretcher



**Maxima 630**  
Grey anodized anti trauma scoop  
stretcher



**Maxima 630/A**  
Orange painted anti trauma scoop  
stretcher

---

---

## ACCESSORIES

---



**616**

Certified vertical fastening system  
for scoop stretchers



**630/CS**

Carrying case for scoop stretchers



**616/A**

Certified vertical fixing system for  
scoop stretchers



**Double 624**

Head immobilizer for scoop  
stretcher



**614**

Certified horizontal fastening  
system for scoop stretchers



**603/MEB**

Nylon bag containing 3 belts Art.  
607/Ameb