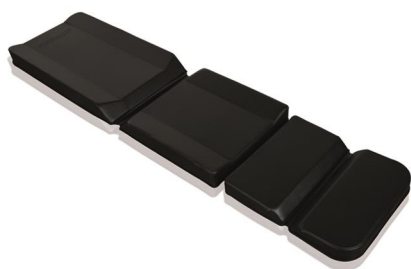




## 7009/N

---

Black electrowelded mattress for self loading stretcher EVOX



---

### FEATURES

Electrowelded mattress for self loading stretcher Evox made of skay and inner fireproof padding. Divided into 2 parts to fit various configuration of the stretcher perfectly. It has raised outer sides to contain the patient.

Dimensions: cm 131x45x8 - 46x42,4x5

\*All Pictures shown are for illustration purpose only.

---

### MAIN FEATURES

Length (cm)	131 46
Width (cm)	45 42
Thickness (cm)	8 5
Material	Skay

---

### SEE ALSO



**7009/A**

Orange electrowelded mattress for self loading stretcher EVOX

---

---

## ACCESSORIES

---



**12100/N**

Black electrowelded shaped cushion with MeBer logo for electrowelded mattresses



**7009-001**

Set composed by 4 black belts with Velcro® fastening to fix mattress art.7009 to EVOX stretcher

---

## ACCESSORY OF

---



**Evox Proof 7112**

"EVOX" certified chair cot with mattress

---