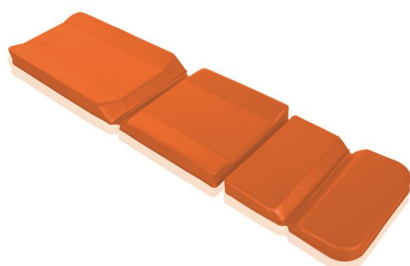




7009/A

Orange electrowelded mattress for self loading stretcher EVOX



FEATURES

Electrowelded mattress for self loading stretcher Evox made of skay and inner fireproof padding. Divided into 2 parts to fit various configuration of the stretcher perfectly. It has raised outer sides to contain the patient.

Dimensions: cm 131x45x8 - 46x42,4x5

*All Pictures shown are for illustration purpose only.

MAIN FEATURES

Length (cm)	131
Width (cm)	46
Min Width (cm)	45
Thickness (cm)	42
	8
	5
Material	Skay

SEE ALSO



7009/N

Black electrowelded mattress for self loading stretcher EVOX

ACCESSORIES



12100/N

Black electrowelded shaped cushion with MeBer logo for electrowelded mattresses



7009-001

Set composed by 4 black belts with Velcro® fastening to fix mattress art.7009 to EVOX stretcher

ACCESSORY OF



Evox Proof 7112

"EVOX" certified chair cot with mattress
