



## 910/GIN PROOF Winner


Self loading trolley for incubators predisposed for certified fixing system



### FEATURES

Designed to load and transport incubators on rescue vehicles. This trolley is part of “Winner” range, keeping the all same features. Made of anodized aluminium, it has same features as Art. 910/GIN with an additional predisposition for our certified fixing system Art. 955 Proof.

### MAIN FEATURES

Pediatric	
Height (cm)	87,5
Max loading height (cm)	65
Min loading height (cm)	62
Folded height (cm)	26
Width (cm)	56
Length (cm)	194
Length with folded trolley (cm)	155
Weight (kg)	31
Material	Anodized aluminium
Loading capacity (kg)	170

---

ACCESSORIES

---



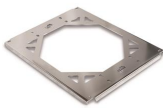
**Rear fixing system**

Rear fixing system for roll-in H=148 mm



**Front blocking device**

Front blocking device for automatic loading stretcher



**12048**

Certified interface for incubator fixation for self loading trolleys



**12050**

Extended trolley incubator interface

---