



7260/INC PROOF Frog Lite

Self loading stretcher for incubators predisposed for certified fixing system



FEATURES

Belongs to "FROG LITE" self loading stretchers range. Made of aluminium alloy to be reliable, sturdy and light. It has been designed to transport incubators on rescue vehicles. Designed without back rest, side protections and rigid platform, this stretcher has predisposition for our certified fixing device Art. 955 Proof.



Device certified according to the European harmonized safety standards UNI EN1865 - UNI EN 1789.

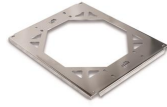
MAIN FEATURES

Pediatric	
Height (cm)	83
Max loading height (cm)	66
Min loading height (cm)	60
Folded height (cm)	26
Width (cm)	56
Length (cm)	196
Length with folded trolley (cm)	167
Weight (kg)	29,3
Material	Painted aluminium
Loading capacity (kg)	250

ACCESSORIES



955 PROOF
EN 1789 fixing system for Proof roll-
in stretchers



12048
Certified interface for incubator
fixation for self loading trolleys



12050
Extended trolley incubator
interface
