



670/BR Extra

Track assisted stair chair with arms



FEATURES

[Visit Extra 670/BR website](#)

EXTRA is the Me.Ber. stair chair with tracked system to descend stairs. Entirely made of lightweight aluminium alloy frame. The backrest and back carrying handles inclination, along with the unique frontal arms configuration, enable a perfect weights distribution, relieving operators' efforts. Long and high-grip tracks allow the EXTRA stair-chair to be safely manoeuvred and handled on 3 stairs when descending with a seated patient. While manoeuvring on smooth and plane surfaces, the 200 mm rear and 150 mm front wheels give exceptional comfort. It is completed with two practical armrests and a telescopic rear bar covered by an high comfort sleeve. Turnable footrest with magnetic locks and innovative bio-mechanical solutions, complete the characteristics of this new rescue device. As optional, a version with brake on the back wheels is available.

DESIGNED FOR SAFE EVACUATION IN PRESENCE OF STAIRS

The main fields of application for a chair are typically the ordinary and extraordinary services, for example the transport services to pick up a patient or take him back home or to a private hospital, where an elevator may not be present. Extra is something more. In fact, it has been conceived and designed to offer maximum support even during fast evacuating operations in emergency services. It is therefore confirmed as a valid ally to better face any kind of situation, from ordinary operations to those in critical conditions.




Device certified according to the European harmonized standards UNI EN 1865 - UNI EN 1789.

STAIR CHAIR MEBER EXTRA- PIE SHAPED STAIRS

STAIR CHAIR MEBER EXTRA - SPIRAL STAIRCASE

MAIN FEATURES

Cardio	
10G Certification	
Height (cm)	101
Width (cm)	55
Length (cm)	81
Max length (cm)	139
Epaisseur pliée (cm)	29
Weight (kg)	20,3
Loading capacity (kg)	230
Material	Aluminium alloy

IMAGES



SEE ALSO



679
Narrow foldable sedan chair



Extra Ergolift 671
Powered stair chair



Extra Ergolift FX 675
Fixed frame powered Stair Chair
suitable for transportation

ACCESSORIES



670-001
Orange/black head immobilizer for
Extra stair chair



960
"Extra fixing system" - fixing system
for chair Extra



670-002
Transpire, dust proof black nylon
cover for Extra chairs



670-004
Castor with brake diam. 200 mm
for Extra chair



612/AN-2/MEB
Adjustable thoracic abdominal belt
orange/black with MeBer band and
4 points fastening for self loading
stretchers and sedan chairs



612/N-2/MEB
Adjustable thoracic abdominal belt
black with MeBer band with 4
points fastening for self loading
stretchers and sedan chairs



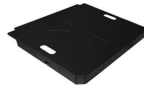
566
Black bag with 3 belts in 2 pieces
made of black ribbon with orange
MeBer logo for Extra chairs



12016-S
Phleboclysis stand (Extra chairs)



975
"Ergolift fixing system" - Fixing
system for chair Extra Ergolift



930L
Seat in black embossed painted
aluminum for 670/BR and 671 extra
chairs



056L
Back in black embossed painted
aluminum for 670/BR and 671 extra
chairs

STANDARD ACCESSORIES



566
Black bag with 3 belts in 2 pieces
made of black ribbon with orange
MeBer logo for Extra chairs
